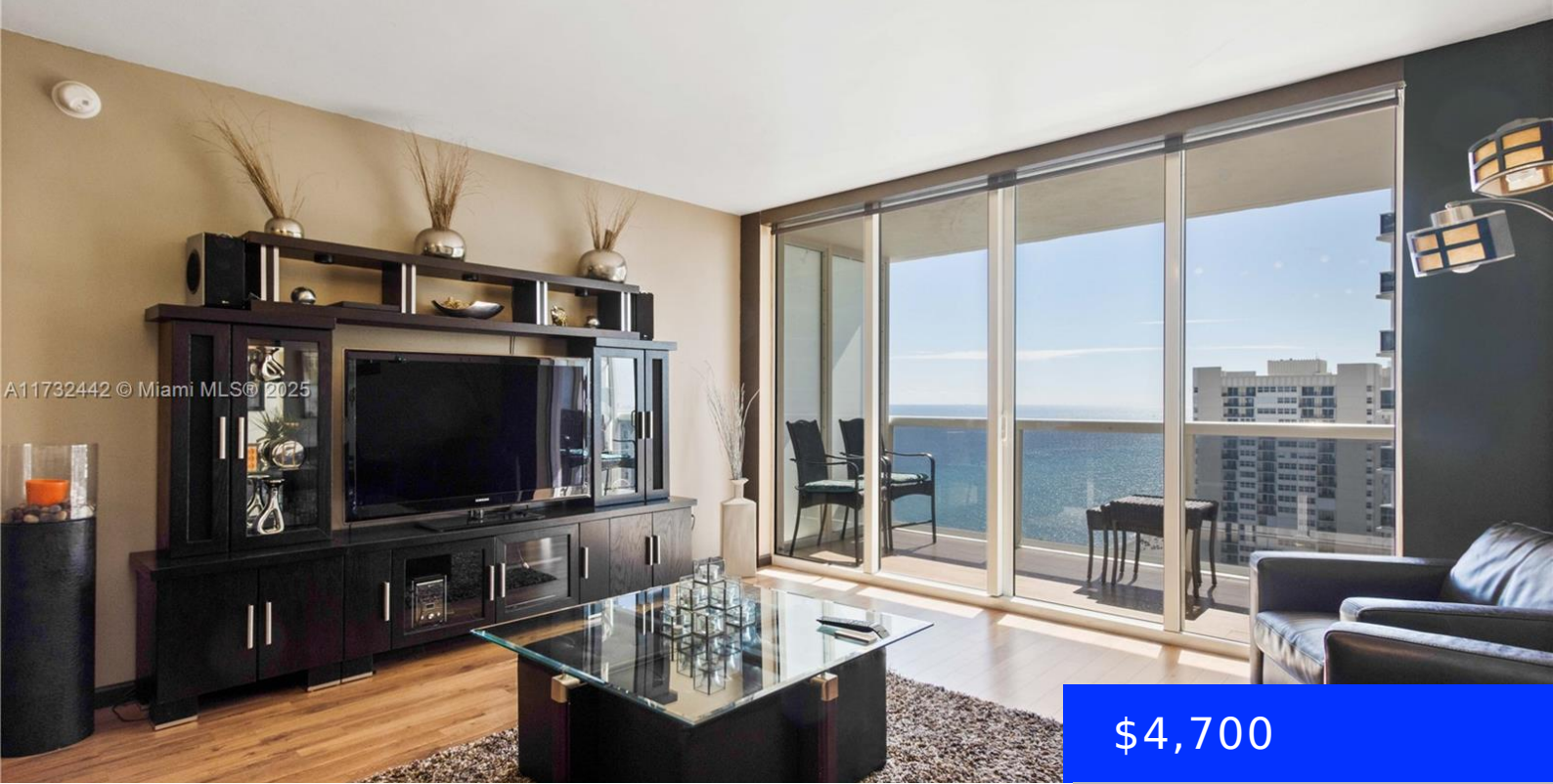


A11732442 © Miami MLS® 2025



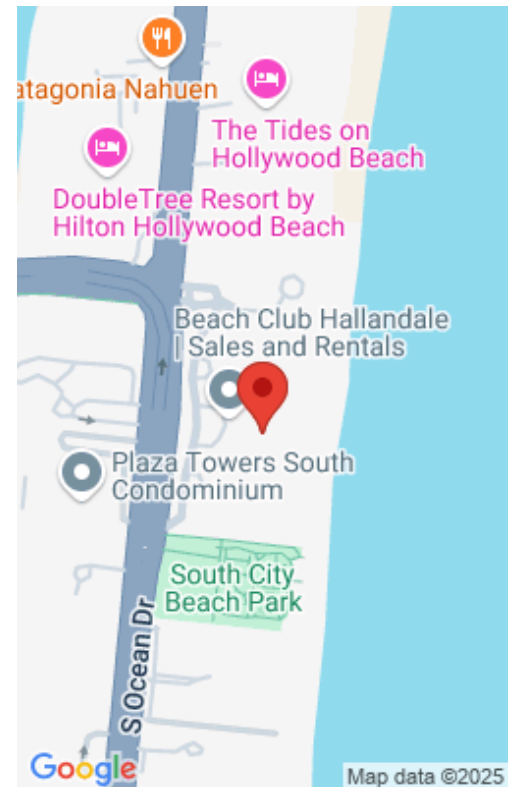
1830 OCEAN DR, HALLANDALE BEACH, FL, 33009

<https://ritterproperties.com>

Experience stunning ocean views from this 21st-floor studio apartment, elegantly furnished with a queen bed. This beautifully designed unit features a European-style kitchen with stainless steel appliances, granite countertops, and a generous terrace to enjoy the scenery. The building offers world-class amenities, including a state-of-the-art fitness center, three resort-style pools, a full-service spa, business center, [...]

\$4,700

- 1 bed
- 1 bath
- Residential Lease
- Condominium
- Active
- 811 sq ft



Basics

Date added: Added 2 days ago **Category:** Condominium
Type: Residential Lease **Status:** Active
Bedrooms: 1 bed **Bathrooms:** 1 bath
Half baths: 0 half baths **Area:** 811 sq ft
Lot size, sq ft: 0 sq ft **SubdivisionName:** BEACH CLUB TWO CONDOMINIUM, BEACH CLUB TWO CONDO
LeaseTerm: Short Term Lease **ListOfficeName:** Cervera Real Estate Inc
GarageSpaces: 1 **View:** Ocean, Direct Ocean, Pool
UnitNumber: 2105 **ListAOR:** Miami Association of REALTORS®
EntryLevel: 21 **MLS ID:** A11732442

Building Details

Cooling features: Central Air, Electric **Year built:** 2006
ArchitecturalStyle: High Rise **NewConstructionYN:** No
Building Name: BEACH CLUB TWO CONDOMINIUM **Exterior material:** CBS Construction
Roof: Concrete **Heating:** Central, Electric
Parking: 1 Space, Assigned, Limited # Of Vehicle, No Rv/Boats, No Trucks/Trailers, Valet

Amenities & Features



Features: Built-in Features, Fire Sprinklers, First Floor Entry, Split Bedroom, Walk-In Closet(s)

Spa Features: Community

CommunityFeatures: Bar, Gated, Pool, Exercise Room, Management On Site, Sauna, Security Patrol, Spa/Hot Tub

ExteriorFeatures: Open Balcony

Waterfront available: Yes

AttachedGarageYN: Yes

PoolPrivateYN: No

Security Features: Fire Sprinklers, Fire Alarm, Smoke Detector, Key Card Entry, Building Security, Lobby Attended, Key/Card Entry Parking, Security Patrol

Amenities: Dishwasher, Disposal, Dryer, Electric Range, Ice Maker, Microwave, Refrigerator, Washer

WindowFeatures: Clear Impact Glass, Complete Impact Glass, High Impact Windows, Impact Glass, Sliding

PoolFeatures: In Ground, Community, Heated, Hot Tub

GarageYN: Yes

CoolingYN: Yes

FireplaceYN: No

