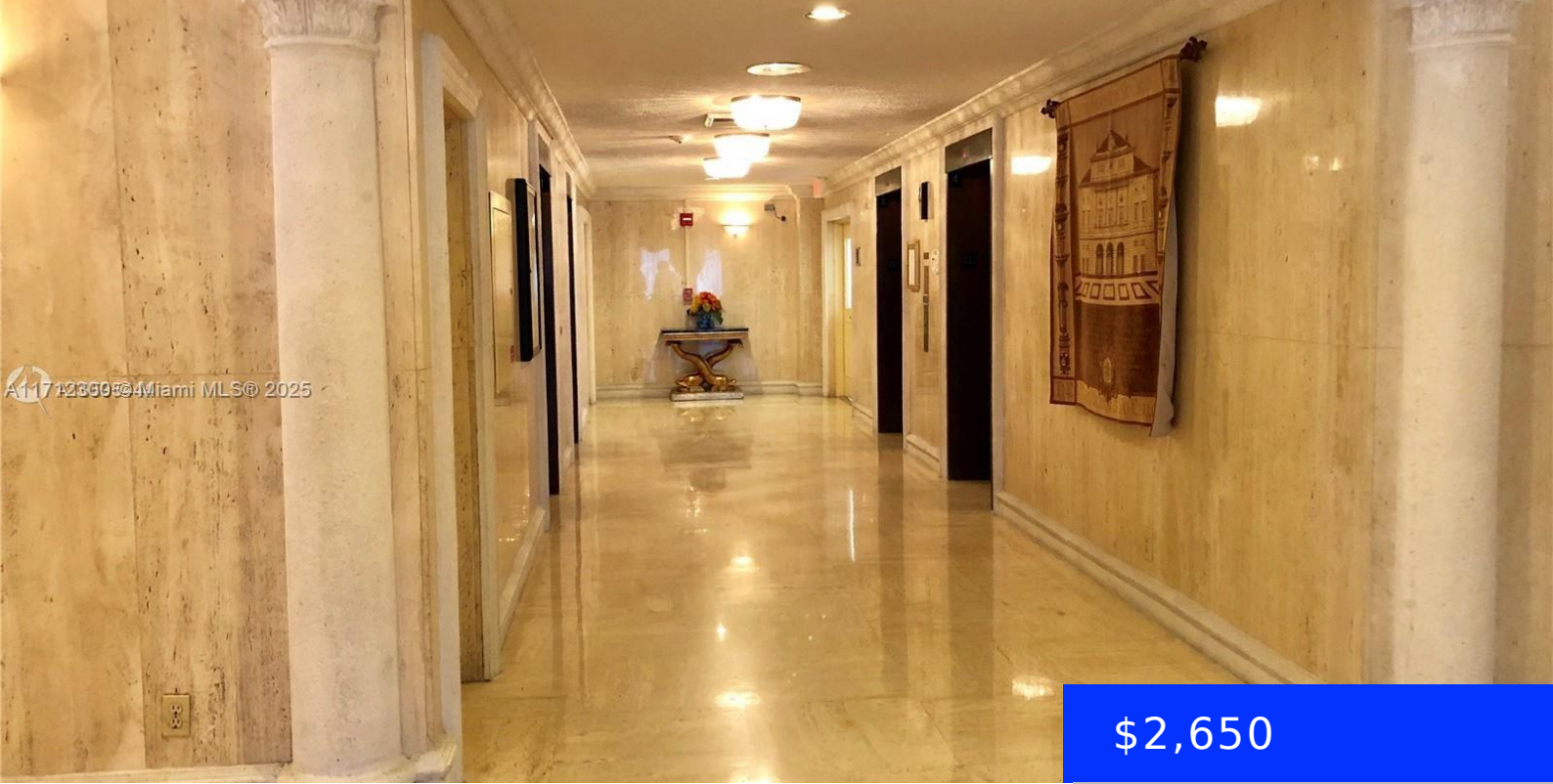


A117 123904 Miami MLS © 2025



\$2,650

2500 PARKVIEW DR, HALLANDALE BEACH, FL, 33009

<https://ritterproperties.com>

Welcome to your dream condo at the Olympus Towers, where luxury living meets resort-style amenities in this bright & super spacious 2-bedroom, 2-baths condo. Immerse yourself in the epitome of convenience & elegance with this renovated turnkey unit. Enjoy direct views & waterway views from this rare north-facing condo. Partially furnished. The updated kitchen features [...]

- 2 beds
- 2 baths
- Residential Lease
- Condominium
- Active
- 1280 sq ft



Basics

Date added: Added 2 weeks ago

Type: Residential Lease

Bedrooms: 2 beds

Half baths: 0 half baths

Lot size, sq ft: 0 sq ft

LeaseTerm: 1 Year With Renewal Option

GarageSpaces: 1

UnitNumber: 707

EntryLevel: 7

Category: Condominium

Status: Active

Bathrooms: 2 baths

Area: 1280 sq ft

SubdivisionName: OLYMPUS CONDO, OLYMPUS TOWERS

ListOfficeName: One Sotheby's International Realty

View: Other, Tennis Court View, Water

ListAOR: Miami Association of REALTORS®

MLS ID: A11712300

Building Details

Cooling features: Central Air

ArchitecturalStyle: High Rise

Building Name: OLYMPUS CONDO

Roof: Concrete

Parking: 1 Space, Limited # Of Vehicle, No Trucks/Trailers, On-street, Valet

Year built: 1978

NewConstructionYN: No

Exterior material: CBS Construction

Heating: Central

Amenities & Features



Features: Storage, Walk-In Closet(s)

Security Features: Smoke Detector, Complex Fenced

Amenities: Dishwasher, Electric Range, Ice Maker, Refrigerator

CommunityFeatures: Clubhouse, Pool, Courtesy Bus, Exercise Room, Laundry Facilities, Management On Site, Picnic Area, Sauna, Shuffle Board

WindowFeatures: Blinds, Sliding, Verticals

ExteriorFeatures: Open Balcony

PoolFeatures: In Ground

Waterfront available: Yes

GarageYN: Yes

AttachedGarageYN: No

CoolingYN: Yes

PoolPrivateYN: No

FireplaceYN: No

