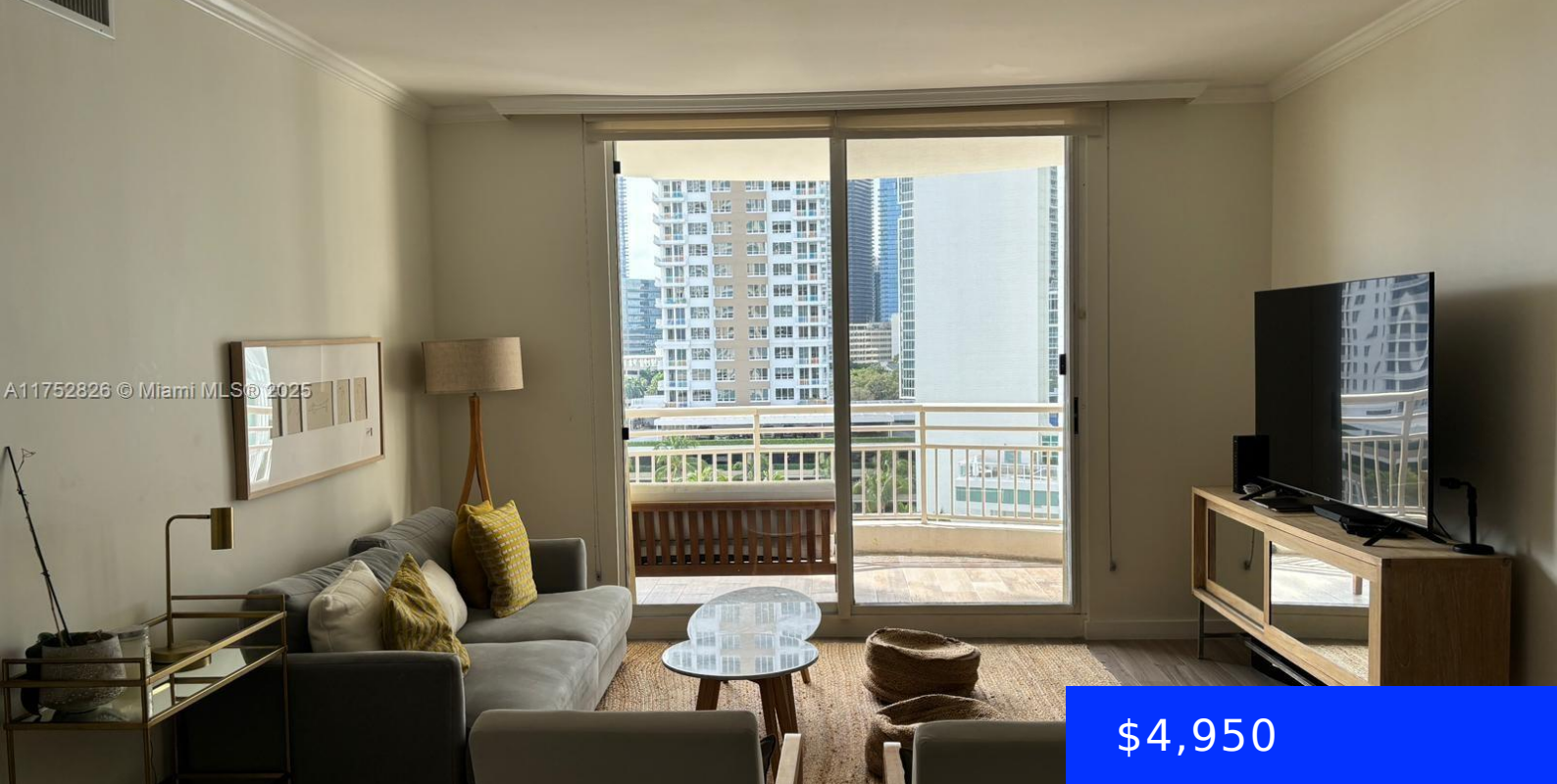


A11752826 © Miami MLS © 2025



**\$4,950**

## **888 BRICKELL KEY DR, MIAMI, FL, 33131**

<https://ritterproperties.com>

Beautiful unit for rent at One Tequesta Point Condominium. A split plan layout separates two bedrooms, two bathrooms and a powder room. The spacious living area, dining area and integrated kitchen are ideal for entertaining. The balcony offers a unique view of the Miami skyline. Unit comes with two parking spots. Building amenities include: pool, [...]

- 2 beds
- 2 baths
- Residential Lease
- Condominium
- Active
- 1410 sq ft

---

## **Basics**



**Date added:** Added 6 days ago **Category:** Condominium

**Type:** Residential Lease

**Status:** Active

**Bedrooms:** 2 beds

**Bathrooms:** 2 baths

**Half baths:** 1 half bath

**Area:** 1410 sq ft

**Lot size, sq ft:** 0 sq ft

**SubdivisionName:** ONE TEQUESTA POINT CONDO, ONE TEQUESTA POINT C

**LeaseTerm:** 12 Months

**ListOfficeName:** BHHS EWM Realty

**GarageSpaces:** 2

**View:** Garden

**UnitNumber:** 1000

**ListAOR:** Miami Association of REALTORS®

**EntryLevel:** 10

**MLS ID:** A11752826

---

## Building Details

**Cooling features:** Central Air

**Year built:** 1995

**ArchitecturalStyle:** First Floor Entry

**NewConstructionYN:** No

**Building Name:** ONE TEQUESTA POINT CONDO

**Heating:** Central

**Parking:** 2 Spaces

---

## Amenities & Features

**Features:** Closet Cabinetry, Fire Sprinklers, Split Bedroom

**Security Features:** Fire Sprinklers, Fire Alarm, Smoke Detector, Key Card Entry, Gated with Guard, Lobby Attended

**Spa Features:** Community

**Amenities:** Dishwasher, Disposal, Dryer, Electric Water Heater, Gas Range, Ice Maker, Microwave, Refrigerator, Trash compactor, Wall Oven, Washer

**CommunityFeatures:** Pool, Exercise Room, Sauna, Spa/Hot Tub

**WindowFeatures:** Clear Impact Glass, Blinds, High Impact Windows

**PoolFeatures:** In Ground

**Waterfront available:** Yes

**GarageYN:** Yes

**AttachedGarageYN:** Yes

**CoolingYN:** Yes

**PoolPrivateYN:** No

**FireplaceYN:** No

